



# Duw Fix®

Build Green World

જેસે આપકે રિસ્તે હે મજબુત  
વેસે હી આપકે ઘરકી બનાઓ મજબુત Duw Fix સે.



**Tile Adhesives**

**Epoxy Grouts**

**Water Puffing System**

**Construction Chemicals**



## :: PRODUCT NAME ::

### **TILES ADHESIVE**

- ☛ C-2 212 Tiles Adhesive Gray
- ☛ S-1 252 Tiles & Stone Adhesive Gray
- ☛ S-2 335 Stone Adhesive Gray
- ☛ S-2 335 Stone Adhesive White

### **EPOXY GROUT SYSTEM**

- ☛ Epoxy Regular
- ☛ Epoxy Sliver
- ☛ Epoxy Gold
- ☛ Epoxy Cooper
- ☛ Epoxy Rainbow
- ☛ Duw Fix Joint Filler

### **LIQUID WATERPROOFING SYSTEM**

- ☛ White SBR (multipurpose)
- ☛ Polymer Based Coating System
- ☛ UNIGARD Polymer Based Coating System



### Product description :

C2 212 tile adhesive ) is thin set cementitious dry mix mortar for installing ceramic, vitrified tiles and natural stones for interior floor & walls application. C2 212 is polymer modified tile adhesive which make it ideal for fixing tiles, natural stones and granite to most building substrates.

### Application :

specially for internal floors and walls  
small and medium size tiles fixing

**FOR BETTER APPLICATION  
USE A NOTCH TROWEL OF  
APPROPRIATE NOTCH SIZE**



### Advantages :

easy to apply, single component adhesive  
extended open time  
superior adhesion properties with adhesion to various substrates  
dual purpose for floor and wall with good adhesion workability  
suitable for subfloors

### How to apply :

add 20 kh of C2 212 tile adhesive )  
to approx. 5.5 to 6.5 litres of cool and clean tap water  
and stir properly for 5 minutes by hand or an electric  
stirrer to get a smooth and homogeneous mixture  
after stirring: wait for 10 minutes, stir once again  
and apply the adhesive on the sub-floor with the  
recommended adhesive notch trowel

Sr. No.	Test	Result	Ref. Test Method/ Code	Specifications as per IS:15477-2019
1	Tensile Adhesion Strength (N/mm <sup>2</sup> )		IS:15477: 2019	For Type-1 Adhesive
	Dry Condition (28 Days)	1.49		Min 0.5
	Wet Condition (28 Days)	1.29		-
2	Shear Adhesion Strength (N/mm <sup>2</sup> )			For Type-1 Adhesive
	Dry Condition (28 Days)	15.69		Min. 1.00
	Heat Condition (28 Days)	12.15		-
	Wet Condition (28 Days)	11.70		-
3	Open Time (Min)	30		-
4	Adjustability (Min)	25		-



### Coverage:

at 3 mm bed thickness 50-55 sq. ft./per 20 kg bag.

### Storage:

store in a cool & dry place. protect from direct sunlight.

### Colour:

grey and white

### Packing Detail:

available in 20 kg bag  
available in 40 kg bag project pakek on demand

### Shelf life:

12 months from the date of manufacturing in unopen condition



**Product description :**

(S1 252 tile adhesive) is a cementitious ready mix which is a thin bed polymer modified tile adhesive for interior and exterior application. its unique properties make it ideal for fixing ceramic tiles, vitrified tiles, natural stones and granite to most building substrates

**application**

specially for internal & external floors and walls all types of tiles and stone

**FOR BETTER APPLICATION  
 USE A NOTCH TROWEL OF  
 APPROPRIATE NOTCH SIZE**



**advantages :**

- easy to apply, single component adhesive
- more open time
- dual purpose for floor and wall with good adhesion workability
- high shear bond strength
- superior adhesion for porcelain and vitrified tiles

**how to apply :**

add 20 kg of S1 252 tile adhesive) to approx. 5.5 to 6.5litres of cool and clean tap water and stir properly for 5 minutes by hand or and electric stirrer to get a smooth and homogeneous mixture after stirring : wait for 10 minutes, stir once again and apply the adhesive on the sub-floor with the recommended adhesive notch trowel

Sr. No.	Test	Result	Ref. Test Method/ Code	Specifications as per IS:15477-2019
1	Tensile Adhesion Strength (N/mm <sup>2</sup> )		IS:15477: 2019	For Type-2 Adhesive
	Dry Condition (28 Days)	1.36		Min 1.0
	Wet Condition (28 Days)	1.18		Min 1.0
2	Shear Adhesion Strength (N/mm <sup>2</sup> )		IS:15477: 2019	For Type-2 Adhesive
	Dry Condition (28 Days)	4.56		Min. 1.25
	Heat Condition (28 Days)	4.34		Min. 1.00
	Wet Condition (28 Days)	5.34		Min. 1.00
3	Open Time (Min)	35		-
4	Adjustability (Min)	40		-

**coverage:**

at 3 mm bed thickness 50-55 sq.ft./per 20 kg bag.

**storage:**

store in a cool & dry place. protect from direct sunlight.

**colour:**

grey and white

**packing detail :**

available in 20 kg bag  
 available in 40 kg bag project pacek on demand

**self lifeh:**

12 months from the date of manufacturing in unopen condition





**Product Description:**

S2 335 Stone Adhesive) is a polymer modified, multipurpose thin- set adhesive for fixing glass mosaic, glass brick wall, swimming pool tiles, marble and natural stones on variety of interior and exterior substrates for wall and floor applications

Application :  
 Specially for internal & external floors and walls  
 All types of tiles and stones

**FOR BETTER APPLICATION  
 USE A NOTCH TROWEL OF  
 APPROPRIATE NOTCH SIZE**



**Advantages :**  
 Multipurpose hi-polymer modified thin set adhesive  
 high bond strength suitable for exterior application  
 of various tiles & stones  
 high flexible adhesive  
 non-skid adhesive  
 water resistance properties  
 better open time with good workability

**how to apply:**  
 add 20kg (S2 335 Stone Adhesive)  
 to approx. 5.5 to 6.5 litres of cool and clean tap water  
 and stir properly for 5 minutes by hand or an electric  
 stirrer to get a smooth and homogeneous mixture

Sr. No.	Test	Result	Ref. Test Method/ Code	Specifications as per IS:15477-2019	
1	Tensile Adhesion Strength (N/mm <sup>2</sup> )		IS:15477: 2019	For Type-3 Adhesive	
	Dry Condition (28 Days)	1.71		Min 1.5	
	Wet Condition (28 Days)	1.12		Min 1.0	
2	Shear Adhesion Strength (N/mm <sup>2</sup> )			For Type-3 Adhesive	
	Dry Condition (28 Days)	6.02		Min. 1.5	
	Heat Condition (28 Days)	4.96		Min. 1.0	
	Wet Condition (28 Days)	5.37		Min. 1.0	
3	Open Time (Min)	30			-
4	Adjustability (Min)	30			-



**coverage:**  
 at 3 mm bed thickness 50-55 sq.ft./per 20 kg bag.

**storage:**  
 store in a cool & dry place. protect from direct sunlight.

**colour:**  
 white and grey

**packing detail :**  
 available in 20 kg bag  
 available in 40 kg bag project pack on demand

**shelf life:**  
 12 months from the date of manufacturing in unopen condition



**A) AREAS OF APPLICATION:**

Duw Fix Joint Filler is a high Polymer Modified Tile Joint Filler used for tile joints in kitchen, bathrooms, toilets, shower stalls etc.

**B) FEATURES & BENEFITS :**

High Polymer content to give waterproof joints  
Non Dusting  
Easy to use. Lump-free grout can be used both vertical & horizontal surfaces.  
Ideal for use in submerged conditions  
Available in a range of pleasing & attractive colours to match the colours of tiles

**C) HOW TO USE:**

Add 2 parts of Duw Fix Joint Filler to one part of water by volume.  
Add powder to water and mix until thick creamy paste produced.  
Apply to the spaces between the tiles using a sponge.  
Pack the mixture into the joints and around the edges.  
Remove uncured excess grout from textured tiles prior to setting.

**D) COVERAGE :**

1Kg Duw Fix Joint Filler approx. 49 running meter or 3mm X 5mm joint.

**E) SAFETY PRECAUTIONS :**

Duw Fix Joint Filler is a cement based tile joint filler. Care should be taken to avoid inhalation of dust and contact with eyes.  
All cement based products, when mixed or damp release alkalis which can be harmful to the skin.

**F) RECOMMENDED STORAGE CONDITION:**

Store in cool and dry place.

Best before : 2 year from the date of manufacturing



NET WEIGHT : 1 Kg



## **MICRO FIBRE REINFORCED FLEXIBLE COATING**

### **Area of Applications**

- Suitable for all exposed areas.
- Roof slabs, parapet lps, Sound brick-bat coba.
- Sunshades cementous water proofing
- Suitable surface preparation and repairs.
- RCC/asbestos/lime terraced roofs.
- Can be used as exterior coting for PVC water tanks exposed to direct sunlight on roofs, balconies, etc. to keep the inside water temperature relatively cooler.
- For further reinforcement use glass fibre mesh on joints, drainpipe, corners or on any cracks.

### **Horizontal Application:**

- Apply prime coat in the ratio of three part of Duw Fix & part of water.
- Apply Two coats of Duw fix without dilution second cota at 90 to first cota.
- Duration between two coats should be 4-6 hours.
- For best result on Terrace, apply Duw Fix to Parapet level including entire roof.

### **Technical Information :**

Film Thikness 340-360. microns (DET) per coat, minimum three coats recommended for optimum performance.

<b>Properties</b>	<b>Test values as per Specifications</b>
Solid Content	~ 76 % (by weight)
VOC	< 10 gm/1
Adhesion Strength On cement after 14 days curing	> 1.7 N/mm
Tensile Strength	1.2 Mpa
Crack bridging properties	2 mm
Elongation at Break (%)	250-300%
Algae resistance test	No growth
Mix Density	1.30

### **Packaging :**

Duw Fix - 1 lit, 4 lit, 10 lit.

### **Storage Conditions :**

Cool and dry conditions.

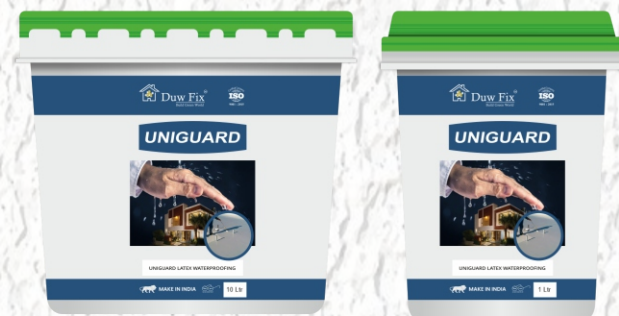
### **Shelf Life :**

Dbest before 36 month if stored properly in undamaged and unopened original sealed packaging.

### **Consumption :**

For horizontal consumption 1 ltr/10 10 sq. ft. on terrace.

For Vertical consumption 1 ltr/20-25 sq. ft. on wall.



***Unique and Simple Solution***



## improve the tensile strength multipurpose and economical

### Product Description :

White SBR is a styrene butadiene rubber latex for improving adhesion strength of all types of cement based mortars with water and vapour resistant bonding properties

### Advntages :

excellent adhesion to cement based mortars  
improve the flexural strength  
lower shrinkage characteristics

### area of application :

waterproofing and repairing structures  
surface treatment and protecting  
excellent choice to use concrete, glass bricks and high porous substrates

### Surface preparation:

all concrete substrates should be clean from dust, free from contamination, efflorescence and curing compounds  
application method:

### as a bonding agent:

White SBR cement & water to maintain ratio as per recommendation chart  
mix thoroughly for homogenous mixture  
apply one coats of mixture with brush as per site condition on the prepared concrete surfaces

### for waterproofing coating :

White SBR cement & water to maintain ratio as per recommendation chart  
mix thoroughly for homogenous mixture  
apply two coats of mixture with brush as per site condition on the prepared substrate as a repair mortar and screed /plaster;  
add White SBR cement, sand & water to maintain ratio as per recommendation chart

Sr.No.	Testing Parameter	Test Result
1	COLOUR	Milky White
2	POT LIFE	30-45 minutes
3	pH	8-10
4	Specific gravity	1.02+0.001 gm/ml.
5	solid content	42% +1
6	time to foot traffic/Heavy traffic	24 hrs. / 72 hrs.

mix thoroughly for homogenous mixture  
wet the repair surface completely before application  
apply one bond coat prior to repair

Application	Mixing Contents				coverage
	white SBR in ltr.	cement in kh.	water in ltr.	sand in kg.	
as bonding agent	1	1.5	1	-	25-30 sq.ft/ltr
as waterproofing	1	3	1	-	35-40 sq.ft/ltr
as repair mortar	1	5	5	15	as actual
as screed/plaster	1	5	5	20	as actual



### colour : milky white

storage: store in a cool & dry place. protect from direct sunlight.

**packing detail :** available in 200 ml, 500 ml, 1 litre & 10 litre  
project pack available on demand

**shelf life:** 12 months from the date of manufacturing in unopen condition



### product description :

(super epoxy grout) is designed specially for use in filling up joints of ceramic tiles, vitrified tiles and stone joints, where hygiene is of utmost importance such as bathrooms, kitchens, living room, bedroom, hospitals, laboratories, swimming pools and high traffic areas. super epoxy grout is three component, easy to mix, chemical resistant joint filler and is available in 26 shades

### features :

colour fast and 100% stain free  
 chemical resistant with non-toxic properties  
 anti-bacterial and anti-fungal  
 strong, durable and easy to clean  
 ideal for waterproof grouting  
 available in 26 shades

### area of application :

washrooms and cleaning rooms  
 swimming pools  
 laboratories  
 schools  
 hospitals and operation theaters  
 lounges

**FOR BETTER APPLICATION  
 USE A RUBBER FLOAT**



### application preparation :

clean application area & remove dirt, dust & excess adhesive from tile joints  
 mix part a & part b in a bucket thoroughly and slowly add part c (filler powder) to make a homogenous mixture  
 using rubber float float fill-up the tile joints  
 wait for 30-45 mins. for joints to harden

#### IDENTIFICATION DATA:

<b>Appearance</b>	Part A: liquid Part B: Liquid
<b>Shelf Life</b>	12 months in the original packaging in Dry Place
<b>Application Data</b>	
<b>Mixing ratio</b>	As specified
<b>Mix Consistency</b>	Creamy(with aggregates)
<b>Pot Life</b>	About 45 minutes at T= +23° C
<b>Permitted Application Temperatures</b>	From + 12° C to +30° C
<b>Recommended Application Temperature</b>	From +18° C to +23° C
<b>Walk on Time</b>	24 hours at T= 23° C
<b>Ready for Use</b>	5 Days at T=23° C
<b>Joint Width</b>	From 2 to 15 mm

#### PERFORMANCE

Shear Adhesion Strength	Initial > 2 N/ m <sup>2</sup> After Immersion in water > 2 N/ m <sup>2</sup> After Thermal Shock > 2 N/ m <sup>2</sup>
Abrasion Resistance	= 250 mm <sup>2</sup>
Mechanical Flexural Strength	= 30 N/ mm <sup>2</sup>
Mechanical Compressive Strength	= 45 N/ mm <sup>2</sup>
After 28 Days in Standard Conditions	
Shrinkage	= 1.5 mm/m
Water Absorption After 4 hours	= 0.1 g
Temperature of Use	From - 20° C to +100° C

### Mixing Details:

Particulars	1 kg Pack	5 kg Pack
<b>Part A - Hardener</b>	<b>100 gm</b>	<b>500 gm</b>
<b>Part B - Resin</b>	<b>200 gm</b>	<b>1000 gm</b>
<b>Part C - Filler powder</b>	<b>700 gm</b>	<b>3.50 kg</b>

### coverage:

varies with width and depth of joint

### storage:

store in a cool & dry place. protect from direct sunlight.

### colour:

available in 26 shades

### packing detail :

available in 1 kg and 5 kg units  
 available in project pakec on demand

### shelf life:

24 months from the date of manufacturing in unopen condition





**REGULAR SERIES**



101 White



102 Quarry Red



103 Silver



104 Dusty Rose



105 Coffee Brown



106 Olive Grenn



107 Tarra Cotta



108 Sandtone



109 Black



110 Sky Blue



111 Raven



112 Ivory



113 Canyon Red



114 Baff



115 Platinum



116 Light Green



117 Alpine Blue



118 Burgundy



119 Parchment



120 Dark Grey



121 Imca Gold



122 Mocha



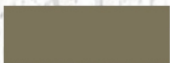
123 Cadmium Red



124 Smoke Grey



125 Sable



126 Natural Grey



**SILVER SERIES**



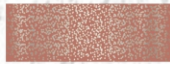
101 White



102 Quarry Red



103 Silver



104 Dusty Rose



105 Coffee Brown



106 Olive Grenn



107 Tarra Cotta



108 Sandtone



109 Black



110 Sky Blue



111 Raven



112 Ivory



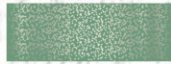
113 Canyon Red



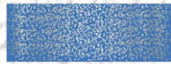
114 Baff



115 Platinum



116 Light Green



117 Alpine Blue



118 Burgundy



119 Parchment



120 Dark Grey



121 Imca Gold



122 Mocha



123 Cadmium Red



124 Smoke Grey



125 Sable



126 Natural Grey



**GOLDEN SERIES**



101 White



102 Quarry Red



103 Silver



104 Dusty Rose



105 Coffee Brown



106 Olive Grenn



107 Tarra Cotta



108 Sandtone



109 Black



110 Sky Blue



111 Raven



112 Ivory



113 Canyon Red



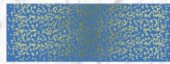
114 Baff



115 Platinum



116 Light Green



117 Alpine Blue



118 Burgundy



119 Parchment



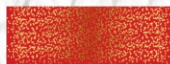
120 Dark Grey



121 Imca Gold



122 Mocha



123 Cadmium Red



124 Smoke Grey



125 Sable



126 Natural Grey



**RAINBOW SERIES**



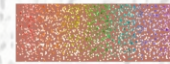
101 White



102 Quarry Red



103 Silver



104 Dusty Rose



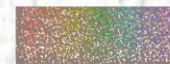
105 Coffee Brown



106 Olive Grenn



107 Tarra Cotta



108 Sandtone



109 Black



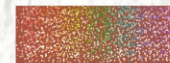
110 Sky Blue



111 Raven



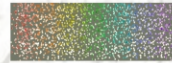
112 Ivory



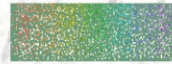
113 Canyon Red



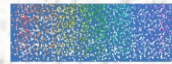
114 Baff



115 Platinum



116 Light Green



117 Alpine Blue



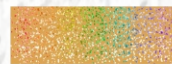
118 Burgundy



119 Parchment



120 Dark Grey



121 Imca Gold



122 Mocha



123 Cadmium Red



124 Smoke Grey



125 Sable



126 Natural Grey





Tiling



Jointing



Finishing



Repair



Flooring



Grout





**Duw Fix**®  
Build Green World

**Block No. 298, Canal Road, Kosmsda, Ta. Kamrej, Dis. Surat. 395006**

**Call :  94995 02775 / 94995 02776**

**Email : [duwfix@gmail.com](mailto:duwfix@gmail.com)**

**website : [www.duwfix.com](http://www.duwfix.com)**



**is a Registered Trademark of 9001 : 2015**